



La naivera

musica: Rudolf Lutz
text: seguond Selina Chönz
adattamaint: Leta Mosca

quiet

Dm Dm A7 Dm

1. Nai - vet - ta___ crou - da___ luot, luo - tin sün___ cha - sas,___ bo - s - cha

Dm A Dm Gm/D Dm C7

e cur - tin. I cresch' e cre - scha___ la nai - ve - -

F A7/E A7 Dm A7 Dm

ra, cu - vern' aint___ tuot da - löntsch, da - spe - ra.

Dm Dm A7 Dm

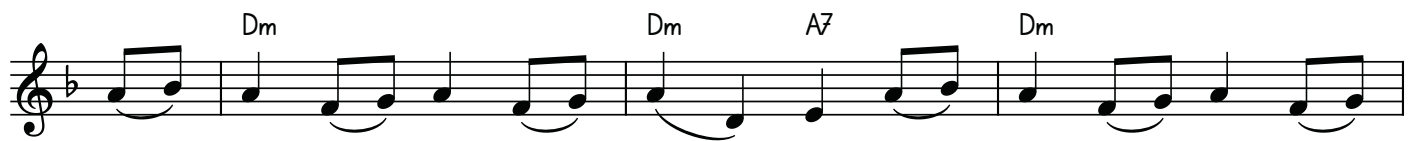
2. Cha - vri - öls, lei - vri - nas___ ed u - tshels van___ tras la___ sbisch' e___

Dm A Dm Gm/D Dm C7

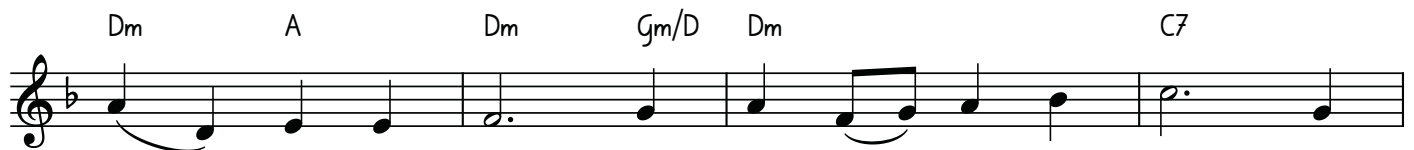
vents tre - mends. E ri - van stan - guels___ ed eir fo - man -

F A7/E A7 Dm A7 Dm

tats, pro'l___ veql bö - s - chun chi sta im - mez ils prats.



3. Sco bu - na__ bra - tscha s-chü - ra sia__ rom - ma__ als per -



chü - ra, ferm in - de - blits sun__ da la gron - da



fom nu chat - tan__ er - ba plü e neir strom.



4. Flu - ri - na tils por - ta per - quai bain spert ün__ sach plain_ fain, dit__



che da - let. Las be - s-chas pro min - cha pi - tschen bun bac -



cun la tschö - gnan ün graz - cha fich pel re - ga - lun.

variante dal 4. vers

La natür'ha per vaira pisserà
 cha las bes-chas rivan tras la s-charsdà.
 E scha ningün nu vain als disturbar,
 il greiv temp d'inviern gnaran da surmuntar.

